

Start-up procedure InternetBridge WebSupervisor

Step 1

Connect all connections of the InternetBridge (antenna & power).
Make sure the antenna is at a high point, with no obstacles nearby.

Step 2

Insert the InternetBridge's SIM card into a phone.
Go to your phone's settings and click on 'Mobile network' (figure 1).
Click on 'Network selection' (figure 2).
Check 'Automatic' (figure 3).
Remember the name of the network.
Check if there is internet by opening an internet page or sending a WhatsApp.
Remove the SIM card from the phone.
Place the SIM card in the InternetBridge.



Figure 1



Figure 2

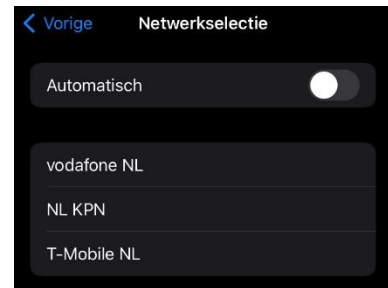


Figure 3

Step 3

Connect a laptop to the InternetBridge with a USB B cable (printer cable).
Open the program IB-NT Config. The password is 0.
Go to 'Settings' → 'General' (figure 4).
Set the WAN Connection mode to 'Cellular'.
Set the AirGate Enable to 'Yes'.
Set the AirGate Address to 'airgate.comap.cz'.
The Connection Type should be set to 'CAN, Addr#1'.
RTC Synchronisation should be set to 'Enabled'.

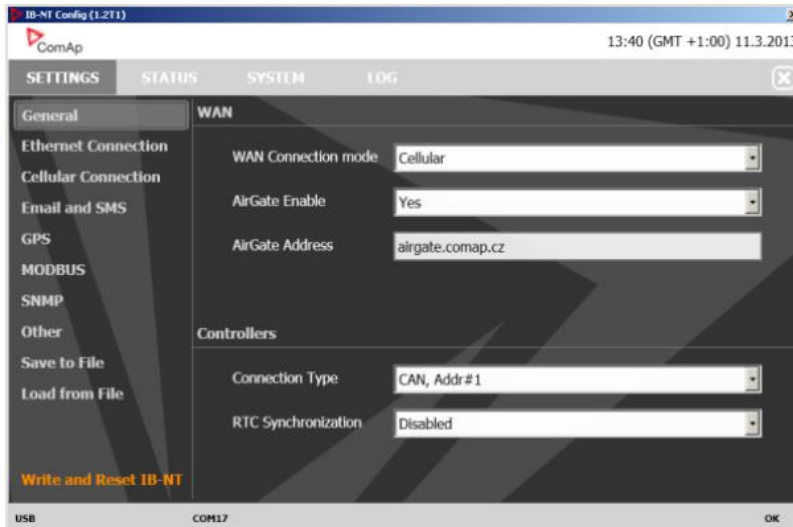


Figure 4: Step 3

Step 4

Go to 'Settings' → 'Cellular Connection'. (figure 5).

Set the 'Network Selection' to 'Automatic'.

The 'Access Point Name' is automatically filled in or left blank.

The 'SIM PIN Status' should be 'Unlocked'.

If this is not the case, unlock the SIM card using the 'Unlock' button.



Figure 5: Step 4

Step 5

In 'Settings' → 'Email and SMS', all fields must be empty. (figure 6)

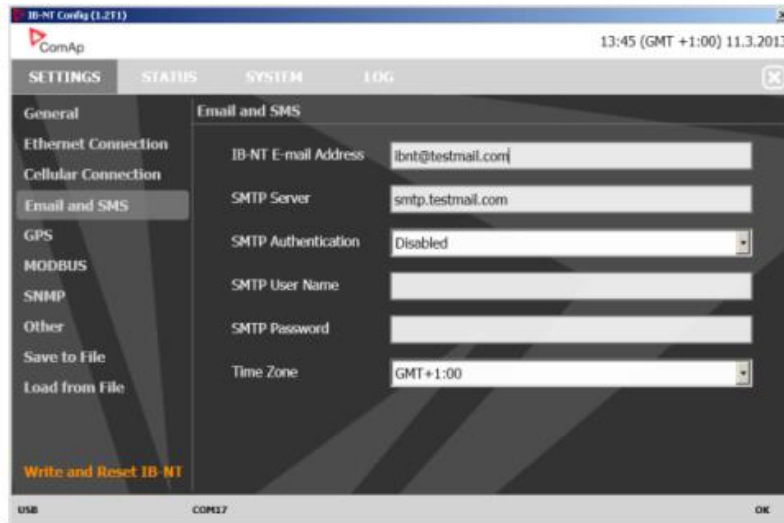


Figure 6: Step 5

Step 6

Under 'Settings' → 'Other', the following details must be entered:

ComAp Protocol TCP port	23
AirGate UDP port	6127
Connection check IP 1	8.8.8.8
Connection check IP 2	8.8.4.4
Connection check IP 3	airgate.comap.cz
Check connection by DNS	Enabled
SNTP server	0.pool.ntp.org

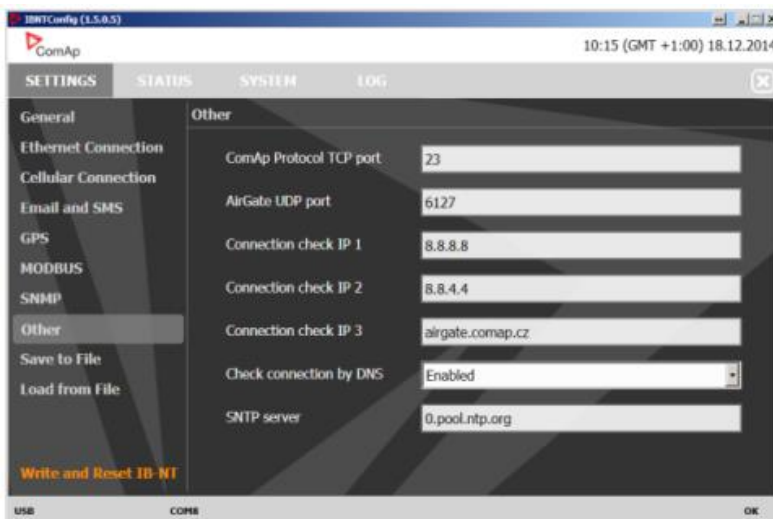


Figure 7: Step 6

STEP 7

Click the 'Write and Reset IB-NT' button at the bottom left. The changes will now be sent to the InternetBridge. The InternetBridge will now reset itself.

Step 8

After the reboot, the InternetBridge restarts.

The 'Controllers' and 'AirGate' lights come on relatively quickly (figure 8).

The 'Cellular' light comes on as soon as there is a connection. This can take between 15 and 30 minutes.



Figure 8: Step 8

Step 9

When the 'Cellular' light is on, again open the IB-NT Config programme on the laptop.

Go to 'Staus' → 'WAN Connection' → 'AirGate ID'.

Give this AirGate ID to the person who needs to enter this code in the WebSupervisor.